

# Disaster-Preparedness Map Of Nakano City

## Shelters

49 sites in the city (mainly in elementary and middle schools) have been designated as "shelters" and these will be used as bases for relief and rescue operations in the event of a disaster.

At the shelters, victims will be accommodated, injured people treated, information to verify safety collected and provided, supplies distributed to victims, and water and food provided.

For these purposes, the following are provided: wireless communications, a well, a generator, cooking sets, floodlights, a water purifier, emergency medical supplies, stretchers, food, etc.

Emergency shelters have been designated, and assigned according to Bosaikai areas.

### Shelters List

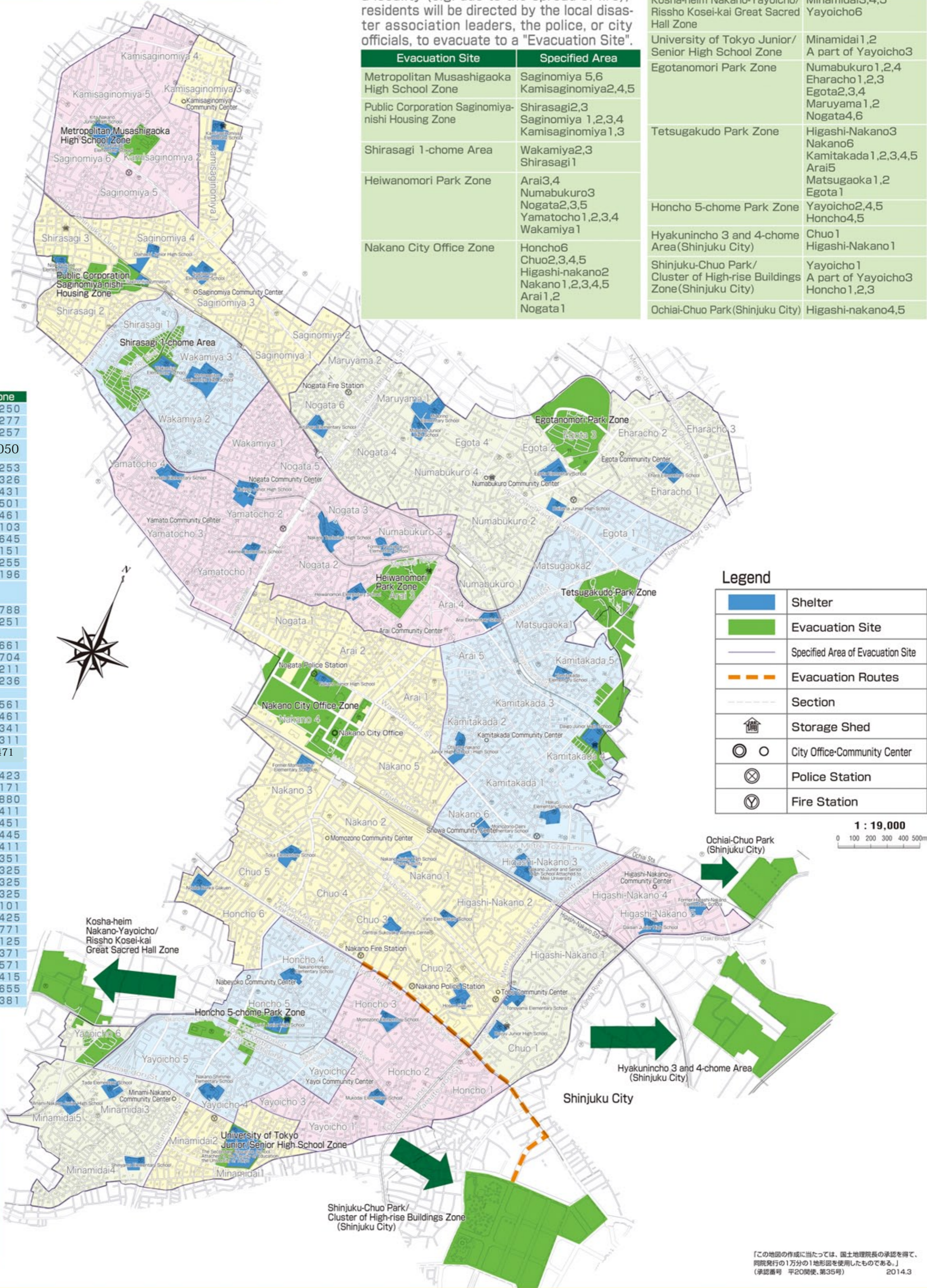
Area	Institution	Adress	Telephone
Minami-Nakano	Shin-yama Elementary School	Minamidai 4-4-1	3381-7250
	Minami-Nakano Junior High School	Minamidai 5-22-17	3381-7277
	Tada Elementary School	Minamidai 3-44-9	3381-7257
	The Secondary Education School Attached to the Faculty of Education, the University of Tokyo	Minamidai 1-15-1	5351-9050
Yayoi	Nakano-Shimmei Elementary School	Yayoicho 4-27-29	3381-7253
	Mukodai Elementary School	Yayoicho 1-25-1	3372-2326
	Momozono Elementary School	Honcho 3-16-1	3372-6431
Tobu	Daiju Junior High School	Chuo 1-41-1	3363-5501
	Tonoyama Elementary School	Chuo 1-49-1	3363-0461
	Hosen Gakuen	Chuo 2-28-3	3371-7103
Nabeyoko	Yato Elementary School	Nakano 1-26-1	3361-3645
	Daini Junior High School	Honcho 5-25-1	3382-7151
	Nakano-Hongo Elementary School	Honcho 4-27-3	3381-7255
Momozono	Nitobe Bunka Gakuen	Honcho 6-38-1	3381-0196
	Nakano Junior High School (from Apr. 2014)	Nakano 1-57-12	
	(Former Daiju Junior High School)		
Showa	Central Sukoyaka Welfare Center	Chuo 3-19-1	3367-7788
	Toka Elementary School	Chuo 5-43-1	3381-7251
	Former Momogaka Elementary School	Nakano 3-40-23	
Higashi-Nakano	Momozono-Daini Elementary School	Nakano 6-13-1	3363-0661
	Nakano Junior and Senior High School Attached to Waj University	Higashi-Nakano 3-3-4	3362-8704
	Otsune-Nakano Junior High School	Kamitakada 2-3-7	3389-7211
Kamitakada	Daisan Junior High School	Higashi-Nakano 5-12-1	3362-5236
	Former Higashi-Nakano Elementary School	Higashi-Nakano 5-27-8	
	Hakuo Elementary School	Kamitakada 1-2-28	3389-0561
Arai	Kamitakada Elementary School	Kamitakada 5-35-3	3389-1461
	Daigo Junior High School	Kamitakada 4-28-1	3389-2341
	Arai Elementary School	Arai 4-19-1	3389-2311
Numabukuro	Nakano Junior High School (from April 2014)	Nakano 4-12-3	3389-1471
	Former Numabukuro Elementary School	Numabukuro 3-13-2	
	Midorino Junior High School	Maruyama 1-1-19	3386-5423
Egota	Dainana Junior High School	Egota 2-9-11	3389-4171
	Ehara Elementary School	Eharacho 1-39-1	3951-5880
	Egota Elementary School	Egota 2-13-28	3385-0411
Nogata	Heiwanomori Elementary School	Arai 3-29-1	3389-1451
	Nakano Technical High School	Nogata 3-5-5	3385-7445
	Kitahara Elementary School	Nogata 6-30-6	3330-2411
Yamato	Midorino Elementary School	Maruyama 1-17-1	3389-2351
	Keimei Elementary School	Yamatocho 1-18-1	3330-2325
	Daiyon Junior High School	Wakamiya 1-1-18	3330-5325
Saginomiya	Yamato Elementary School	Yamatocho 4-26-5	3330-1325
	Metropolitan Saginomiya High School	Wakamiya 3-46-8	3330-0101
	Wakamiya Elementary School	Wakamiya 3-53-16	3330-1425
Kamiasagamiya	Saginomiya Gymnasium	Shirasagi 3-1-13	3337-1771
	Nishi-Nakano Elementary School	Shirasagi 3-9-2	3330-3125
	Saginomiya Elementary School	Saginomiya 3-31-4	3330-7371
Musashidai	Daihachi Junior High School	Saginomiya 4-7-3	3330-7571
	Kita-Nakano Junior High School	Kamisaginomiya 5-7-1	3999-3415
	Musashidai Elementary School	Kamisaginomiya 5-1-1	3999-1655
Kamiasagamiya	Kamisaginomiya Elementary School	Kamisaginomiya 1-24-36	3926-6381

## Evacuation Site

Should it become dangerous to remain in a locality (e.g. due to the spread of fire), residents will be directed by the local disaster association leaders, the police, or city officials, to evacuate to a "Evacuation Site".

Evacuation Site	Specified Area
Metropolitan Musashigaoka High School Zone	Saginomiya 5,6 Kamisaginomiya2,4,5
Public Corporation Saginomiya-nishi Housing Zone	Shirasagi2,3 Saginomiya 1,2,3,4 Kamisaginomiya1,3
Shirasagi 1-chome Area	Wakamiya2,3 Shirasagi1
Heiwanomori Park Zone	Arai3,4 Numabukuro3 Nogata2,3,5 Yamatocho1,2,3,4 Wakamiya1
Nakano City Office Zone	Honcho6 Chuo2,3,4,5 Higashi-nakano2 Nakano1,2,3,4,5 Arai1,2 Nogata1

Evacuation Site	Specified Area
Kosha-heim Nakano-Yayoicho/Rissho Kosei-kai Great Sacred Hall Zone	Minamidai3,4,5 Yayoicho6
University of Tokyo Junior/Senior High School Zone	Minamidai1,2 A part of Yayoicho3
Egotanomori Park Zone	Numabukuro1,2,4 Egota2,3,4 Maruyama1,2 Nogata4,6
Tetsugakudo Park Zone	Higashi-Nakano3 Nakano6 Kamitakada1,2,3,4,5 Arai5 Matsugaoka1,2 Egota1
Honcho 5-chome Park Zone	Yayoicho2,4,5 Honcho4,5
Hyakunincho 3 and 4-chome Area(Shinjuku City)	Chuo1 Higashi-Nakano1
Shinjuku-Chuo Park/Cluster of High-rise Buildings Zone(Shinjuku City)	Yayoicho1 A part of Yayoicho3 Honcho1,2,3
Ochiai-Chuo Park(Shinjuku City)	Higashi-nakano4,5



### Evacuation is a last resort.

Evacuation will be necessary if ...

① your house is in danger or fire or collapse, or ② you are advised to do so by the police or the city authorities.

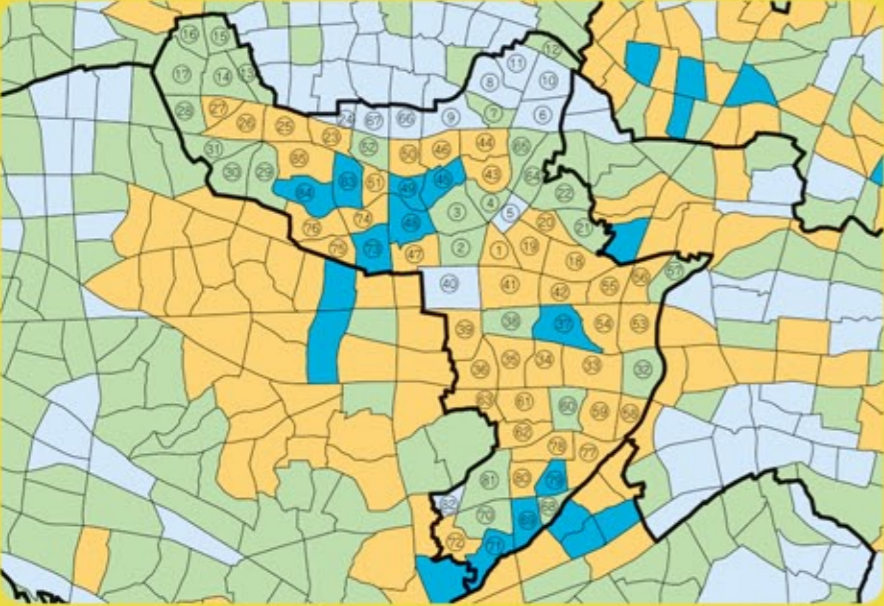
If a major earthquake occurs, the most important thing is to keep yourself safe, and then to extinguish fires and prevent fires breaking out.

After ensuring their own safety, we ask that everyone from the locality cooperate in undertaking fire-fighting and rescue activities. However, when in immediate danger, residents should evacuate to a safe "shelter" or "evacuation site".

### Susceptibility of local areas to earthquake damage

\* Surveys have been made of 5,133 areas of the 23 cities of Tokyo and the urban areas of Tama, to assess the risk of earthquakes pose to different localities. Each area is given a rank from 1 to 5, reflecting the relative level of risk. (Nakano City has 85 areas.)

#### ① Building collapse risk in light of Emergency Response Difficulty

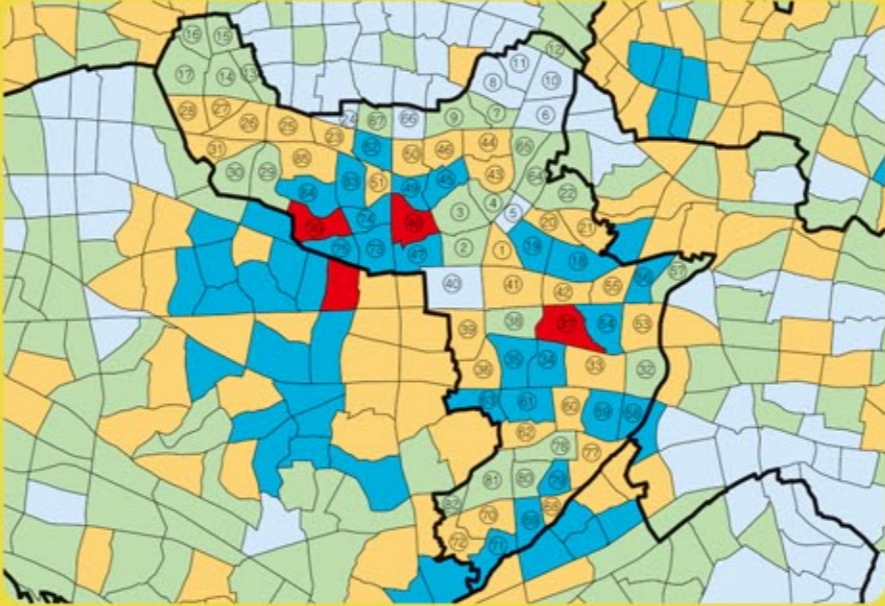


Assesses the danger level of buildings collapsing or becoming unstable due to an earthquake.

According to Tokyo Earthquake Measures Byelaw Article, the Susceptibility of local areas to earthquake damage has been conducted and the results have been announced by Tokyo Metropolitan Government about every five years since 1975. In September 2013 the seventh results of this survey were announced.

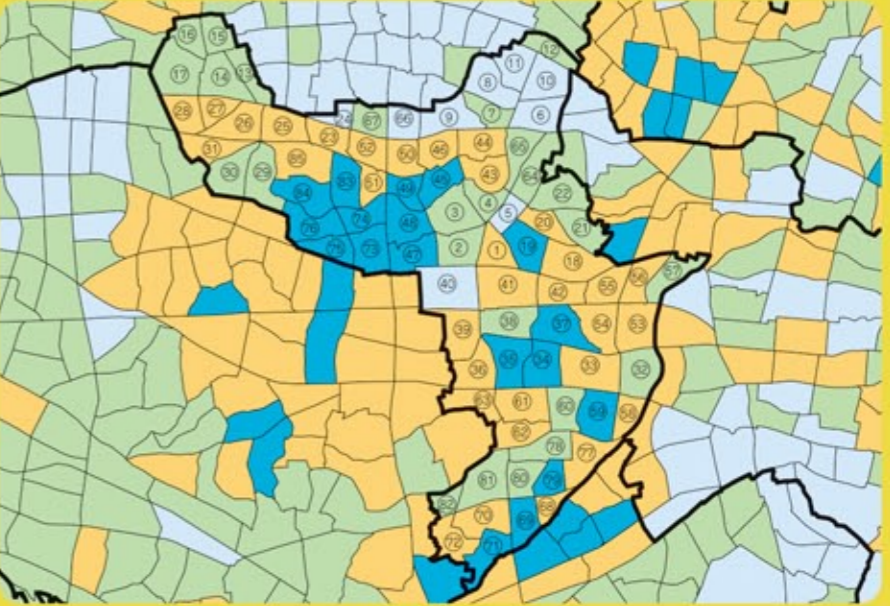
As of this survey, risks were assessed in light of Emergency Response Difficulty (which evaluate the basic conditions of roads and other physical infrastructure necessary for emergency response in an area). This allows risk assessments to take into account the difficulty of evacuation, firefighting, and other rescue efforts.

#### ② Fire risk in light of Emergency Response Difficulty



Integrates the two assessments (Risk of building collapse and Risk of fire) and gives a rank from 1 to 5.

#### ③ Combined risk in light of Emergency Response Difficulty



Assesses the danger level of buildings collapsing or becoming unstable due to an earthquake.

#### Definitions:

- 5
- 4
- 3
- 2
- 1

「この地図の作成に当たっては、国土地理院長の承認を得て、同院発行の1万分の1地形図を使用したものである。」  
(承認番号 平20関保、第35号) 2014.3